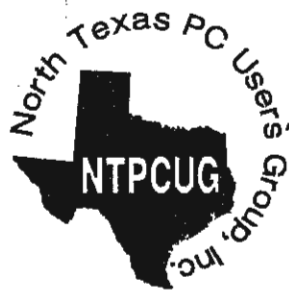


Price \$3.00

North Texas



PC NEWS

**SPECIAL SIG LEADERS
MEETING TO SCHEDULE
ROOMS AND TIMES FOR
JUNE MEETING @ 2 PM**

May, 1999

VOLUME 18 • NUMBER 5

Published monthly by members of North Texas Personal Computer Users Group for their use. Members each receive a free subscription; for others, price of the NEWS is \$3 per copy. Members are requested to notify the Membership Director in writing of address changes. Send all editorial correspondence to: Editor, North Texas PC NEWS, 6402 Vanderbilt, Dallas, TX, 75214-3453

Send address changes to: Membership Director, NTPCUG, P.O. Box 703449, Dallas, TX 75370-3449.

Managing Editor Reagan Andrews
(214) 828-0699

Newsletter Exchange Lewis Graber

Advertising Director Connie Andrews, (Acting) -
(214) 828-0699
Mail all advertising material and ad payments to
North Texas PC NEWS
c/o 3100 Lincoln Plaza
500 North Akard
Dallas, TX 75201-3320

The opinions expressed herein are those of the authors and do not necessarily reflect those of the Group or its members. Copyright © 1999 by North Texas PC NEWS. (Articles without specific copyright notices may be reproduced unchanged by other not-for-profit User Groups if credit is given to the author and the publication.)

Deadline:

All advertising and other material for publication in North Texas PC NEWS must be received by the NEWS staff by the 15th of the month prior to publication unless otherwise listed. See deadline information below.

Circulation:

North Texas PC NEWS circulation was 1,650 last month.

Member distribution was 1,400; remaining copies were distributed to PC user groups around the country, and to advertisers, prospective members and others with common interests.

The editors of North Texas PC NEWS use Microsoft Word for Windows 97. This issue of North Texas PC NEWS was composed using Corel Ventura 8.0, Corel Draw 8.0, Arts & Letters Express 6.01, Adobe Photoshop 4.01, Micrografix Picture Publisher 8, Microsoft Publisher 98 and HP Scanjet 6200Cse. Repro was printed on a HP LaserJet 4M. Principal typefaces include: Times, Palatino, Helvetica, A&L Cafe, French Vogue, and Lithos.

DEADLINE
Copy deadline for June
North Texas PC NEWS:
May 17, 1999

Meeting Dates:

May 15 – 3rd Saturday
June 19 – 3rd Saturday
SIGs To be Announced

President's Message 2
Jim Hoisington

Big Rewards — Without a Paycheck 3
Carla Foster

New SIG Meeting Site Map 4
Marsha Drebels

NTPCUG Volunteers Clean SIG Site 4
Claude McClure

Small Business Financial Manager 5 - 9
Bob Russell

Variety Store 10 - 12
Reagan Andrews

In This Issue...

Special Items:

SIG Reports . . . 13 - 19

Membership Application 19

Volunteer Guide 20

Officers & People You
should know 21

Submit Newsletter articles to: reagan.andrews@ntpcug.org
Visit the North Texas PC Users Group web page:
<http://www.ntpcug.org>

North Texas PC News

Advertising Prices and Policies

Ad Size	1X	3X	6X	12X
2-Page Spread	\$400	\$325		
Full Page (7 x 9)	225	195	\$165	\$150
Half Page (7 x 4 1/2)	150	125	110	100
Qtr Page (3 1/4 x 4 1/2)	100	80	65	55
Business Card (2 x 3 1/4)	65	50	40	35
Business Card (Members)	35	25	20	20

Reduced rates for multiple insertions of same ad. Require prior commitment in writing and payment in advance (3 months minimum). Copy and mechanical changes requested between insertions will be billed accordingly.

Deadlines: All advertising copy must be received by the PC News staff no later than the 10th day of the month prior to the month of publication unless other arrangements are made with the Publisher. NT PC News publication date is 10 days before the monthly meeting of the North Texas PC Users Group.

Policies & Mechanicals:

- Commercial ads must be in repro form, in final size, ready for printing.
- Halftones must be furnished as final size, screened prints or negatives.
- Halftone screens cannot exceed 100 LPI maximum.
- No ads on front cover. Bleed pages and color must be discussed with Publisher before submission.
- Related ads only; suitability is at discretion of the Publisher and the North Texas PC Users Group Board of Directors.

Payment: Payment in advance of publication.
Make checks payable to: North Texas PC Users Group, Inc.

PROGRAMS & PRESENTATIONS . . . *TIMOTHY CARMICHAEL*

USER GROUP MEETINGPLACE AT BIG TOWN MALL

MAY 15

10:00 AM - 11:30 AM **Adobe InDesign for Professional Publishing**
Adobe Systems Incorporated
www.adobe.com

Join us in the grand opening of the new User Group Meetingplace at this joint meeting with the Apple Corps of Dallas, and see the new Adobe cross-platform professional publishing software, InDesign. Running on Windows 98, Windows NT 4.0 and Mac OS8.5 platforms, InDesign works seamlessly with Adobe Photoshop and Adobe Illustrator. It can even open QuarkXPress and PageMaker files, and can save publications in Acrobat PDF file format. This tight integration across platforms, coupled with new easy to use creative tools and production features, provides you with new levels of power, precision and control of publications. There will be a drawing for free products. *

12:00 PM - 12:30 PM **NTPCUG Business Meeting**

There will be a drawing for some free products. *

2:00 PM **Meeting of Apple Corps and NTPCUG SIG Leaders**

Meeting of the SIG Leaders to work out scheduling of the rooms for SIG meetings starting in June.

* Tickets for each drawing will be given out from 10 minutes before until 15 minutes after the start-time of the meeting to attending NTPCUG members who show proof of membership.

SIGs **NTPCUG SPECIAL INTEREST GROUP MEETING SCHEDULE**

8:00 - 8:55
 Internet - WEB Developers
 Microsoft Networking
 Visual BASIC - Beginning

8:00 - 9:55
 Hardware Solutions

9:00 - 9:55
 DOS/Networking Systems
 Genealogy
 Internet-Advanced
 Introduction to the PC
 SQL Server
 Quicken
 Visual BASIC
 Windows Applications
 MS Word for Windows
 Y2K SIG (new)

9:00 - 10:55
 Dallas Corel

9:00 - 10:55
 Emerging Technologies
 Fox Pro Database
 Networking

10:00 - 11:55
 Introduction to the PC
 AF-C genealogy
 WordPerfect for Windows
 LINUX

11:00 - 11:30
 Business Meetings

11:00 - 11:55
 Assembly Language
 Family Tree Maker

11:00 - 11:55 Ctd.
 CAD (Cont)
 Investors
 Microsoft
 Microsoft FrontPage
 Ultimate Family Tree
 Green Sheets
 Microsoft News Client/WinFC

11:30 - 12:00
 NTPCUG Orientation

12:00 - 12:55
 Access
 Vana Four
 Communications
 Desktop Publishing
 Introduction to the PC
 Vana
 The Master Genealogist

12:00 - 1:55
 VRGN Internet Gaming

1:00 - 1:55
 ActiveX Developers
 Business Apps./DAC Easy

1:00 - 1:55 Ctd.
 Introduction to the PC
 Lotus Notes & Domino

QuickBooks

2:00 - 2:55

Advanced Programmers

SIG Schedules may be subject to changes at the last minute. Please consult the BBS, or the NTPCUG Web page (www.ntpcug.org) and remember to check the handouts in the INFOMART lobby and at the NTPCUG Information Booth in the Vendor Area for latest SIG schedules and room locations.

Watch this Space for New SIG Meetings in June

SIG Meeting Site

I've signed the contract on the site at Big Town Mall. Harold "Spike" Smith is working on getting our certificate of occupancy.

We are planning on having Adobe give a joint presentation to Apple & NTPCUG from 10:00 a.m. to 12:00 p.m. on May 15th, in the large room, just inside the entrance. The NTPCUG business meeting will be in the same room at 12:30. At 2:00 p.m., we'll hold a meeting with the SIG leaders to draw up a schedule for the rooms for the June 19th meeting.

I announced at the April Business Meeting that any SIGs wanting to meet on Saturday, May 15th should contact our SIG Coordinator, Alex Lilley. So, it is possible that some of the SIGs will be meeting there in May. Check our Web site, ntpcug.org, for late-breaking information.

How do I find the MEETING site?

The meeting site is Suite 934 which is on the west side of Big Town Mall. We'll have a banner near the door. Big Town Mall is across the parking lot from the Big Town Exhibit Hall where we have the DFW Xchange vendor show. [Editor's note: there is also a map of the Big Town Mall area on page 4 supplied by Marsha Drebelbis.]

NTPCUG TRAINING VIDEOS

Check out the new NTPCUG Multimedia Rental LIBRARY

*NTPCUG is now offering
(as a member benefit) rental of training
videotapes, audiotapes and CD's to
Members at the NTPCUG Information
Booth in the Vendor Area*

The NTPCUG Multimedia Library Includes:
Program Tutorials, Interactive Learning Guides
for Beginners and Advanced Users in a wide
range of PC Applications from Arts & Graphics
to Windows 95 and ... Everything in Between

Contact us NOW!
NTPCUG Information Booth
Claude McClure (972) 867-0978



DELTA ELECTRONICS MAY BE CLOSING

I got a call the other night from a member of AUNT, Atari Users of North Texas. He says that Delta Electronics in Hurst is thinking of closing. Delta Electronics is one of the last places in the Dallas - Fort Worth area where you could go and buy electronics parts. So, if you need some parts, pay them a visit soon. Delta Electronics phone number is 817-268-4800.

JON "maddog" Hall to visit Dallas

Jon "maddog" Hall will be the featured speaker at the DFW Unix User's Group meeting on Thursday, May 6th. Jon is a tireless and entertaining promoter of the Linux operating system. The meeting will be at 7:00 PM at the Crown Plaza Suites at Coit and LBJ Freeway. The meeting is free and open to the public. For current information, please check out the user group's Web site

MICROSOFT TECH TOUR

Microsoft Tech Tour visited Dallas on Saturday, April 3rd. There were lots of prizes and the first 100 attendees were signed up to receive the 3rd Beta release of Windows 2000. I gave the opening remarks and NTPCUG had a membership table there.

However, there were only 65 people in attendance. Seems the bulk mailer didn't mail the announcement of the meeting until the day before the meeting, from Ames, Iowa.

And that's a shame. The presentation was excellent. And, almost everyone there won something in the drawings.

Jim...

Microsoft
eXtreme...
Free LIVE
event
on June 5!

Get the
inside scoop
on what's **new** from
Microsoft.

Microsoft product managers will present demos and tips and tricks on:

- **Microsoft Windows 98 Second Edition and Home Networking**
- **Internet Explorer 5**
- **Office 2000**
- **Windows CE**
- **Plus, a look at future technologies**

Microsoft and **North Texas PC Users Group** have teamed up to bring you Microsoft **eXtreme**, broadcast LIVE to 31 theatres across the United States.

If you're a **computer enthusiast** who wants to know the latest about Microsoft consumer products, you'll want to attend **eXtreme**.



DATE: Saturday, June 5, 1999
PLACE: UA Plaza 8
Dallas, TX
TIME: 12:00-2:00 P.M., CENTRAL TIME
EVENT CODE: 24603

Register now!
eXtreme
sells out fast!

For registration and complete information, visit www.microsoft.com/extreme or call (800) 575-1243 to register.

Sponsored by:  **HEWLETT*
PACKARD**

Microsoft

© 1999 Microsoft Corporation. All rights reserved.
Microsoft and Windows are either registered trademarks or trademarks of Microsoft Corporation in the United States and/or other countries. Other product and company names mentioned herein may be the trademarks of their respective owners.

Big Rewards – Without a Pay Check

By Carla Foster

In New England, a small group of volunteers is building a full-sized replica of a tall-mast sailing vessel. The ship was a renewal of the *Friendship* built in 1797.

The original *Friendship* sailed from Salem, Massachusetts to ports around the world, trading local goods for exotic items and profit. The *Friendship* played a key role in Salem's trading history.

The 1998 maritime builders have labored for two years to construct the haul and lower decks. The ship is shaping up and taking form. The new *Friendship* is berthed at the Salem Maritime National Historic Site.

The people who run the Salem Maritime National Historic Site and the manpower constructing the vessel are volunteers. People working their passion. They gain knowledge, spread history, and educate the curious for the joy of doing it.

They do not get a paycheck. They do not grumble and complain about work conditions or long hours. They are volunteers giving from the heart for something they believe in.

You too can be a NTPCUG volunteer and give from the heart for something you believe in. Do you believe in mentoring programs? Do you believe in communicating to members through a quality newsletter? Do you believe in encouraging professional awareness of the latest trends and technology in the computer world?

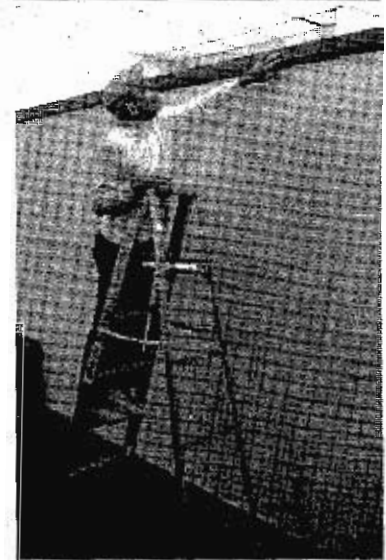
If you believe in yourself and your value to the group—you are ready to volunteer for NTPCUG. You can be a part of building the ship of knowledge and professional growth for computer professionals.

Call Claude McClure at (972) 867-0978 (h) to see where your passion can contribute to NTPCUG. [Editor's note: This is the third installment in a series written by Carla Foster on the value of volunteering.]

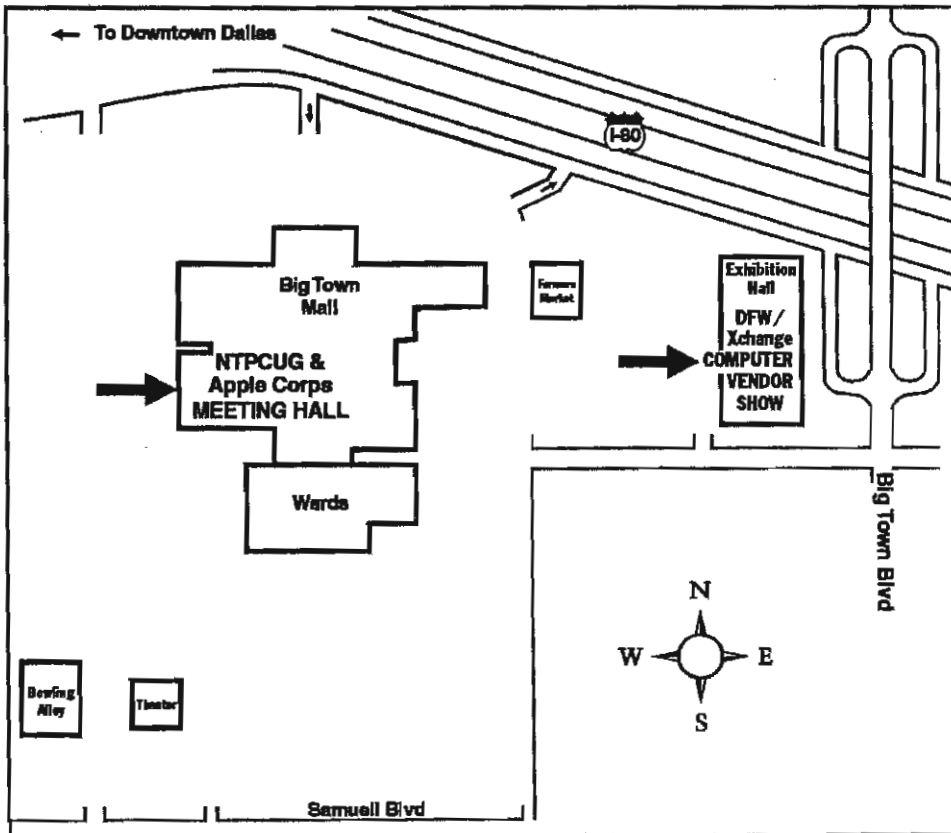
Carla

How do you convert a church into the new NTPCUG SIG area? With Volunteers Claude McClure, below left, talking

with Tom Browning, or with Don Benish, below, Gil Brand right, Spike Smith, below right, or Taylor Sharpe, bottom.



Site Map



Small Business Financial Manager 4.0

Research shows that approximately 50% of small business users use spreadsheets and about 86% use a PC-based accounting/bookkeeping package. To help these users bring data from their accounting packages to their spreadsheets for further analysis and presentation is the goal behind Small Business Financial Manager 4.0(SBFM 4.0).

The Small Business Financial Manager 4.0 (SBFM 4.0) is an add-in for Microsoft Excel 2000 that targets small business owners/managers and certified accountants who use PC-based applications for accounting. SBFM 4.0 makes it easy for users to generate financial and sales reports and provides interactive templates for performing what-if analysis. It also lets users view their business from several perspectives so they can make better business decisions. There have been several versions of SBFM, each one upgraded to be compatible with a particular version of Excel. SBFM 4.0 is the version that will accompany the Office 2000



suite, and is part of the suite in Office Small Business Edition 2000 (SBE 2000)

FEATURES AND BENEFITS OF SBFM 4.0

SBFM 4.0 provides several features and benefits. For instance, with SBFM 4.0 users can:

- Easily import accounting data into Microsoft Excel 2000. The powerful Pivot table and Pivot Table charting features of Excel are used to:

 - Create flexible and dynamic financial reports.
 - Create What-if types of scenarios using SBFM 4.0 templates to provide the framework to make better business financial decisions.
 - Apply Microsoft Excel 2000 built-in tools to analyze, view and present the data imported from the accounting system.

SUPPORTED ACCOUNTING PACKAGES

Following are the accounting packages supported by SBFM 4.0:

Accounting Package	Files	Information
Microsoft Money Personal & Business version 1.0	mpbcma.dll	
M.Y.O.B version 7.x	myob7x.dll	
Peachtree Complete Accounting version 7.0	uspaw70.dli	
Peachtree POA version 1.1	uspoa1x.dll	
Intuit Quickbooks versions 5&6	usqb5x.dll	
Intuit Quickbooks version 7	usqb6x.dll	



Formerly OnRamp, National Knowledge Networks and Signet Partners

BUSINESS CONNECTIVITY

Lan ISDN, Point-to-Point T1, Fractional T3

WEB SITE HOSTING & MANAGEMENT

Virtual Domain, Server Collocation

CONSULTING

Firewall Security, Network Design

DIAL-UP ACCESS

28.8K - 56K analog, 64K - 128K ISDN, V.90

www.veriotexas.net, info@veriotexas.net

1-888-266-7267

Simply Accounting
version 7.0A

casa7x.dll smsa_crp.dll

*These filters will be available from the Microsoft website within 30 days of the product's release.

SBFM 4.0 requires Microsoft Excel 2000 running on Windows 95, Windows 98, or Windows NT 4.0 Service Pack 3 or later. Because of its use of DAO, it is not supported on the Macintosh. Following is a comprehensive list of system requirements:

- Personal computer with Pentium 90 or higher processor
- Windows 9x or Windows NT 4.0 with Service Pack 3 or greater
- Microsoft Excel 2000
- 8 MB memory for use on Windows 95; 16 MB memory for use on Windows NT
- 68 MB available hard drive space for complete installation with all options selected
- CD-ROM drive

- VGA or higher-resolution monitor
- Microsoft Mouse or compatible pointing device
- Accounting package supported by SBFM

Using SMALL BUSINESS FINANCIAL MANAGER 4.0

WHAT DOES SBFM 4.0 DO?

SBFM's three main functions are:

- Importing Data** – SBFM 4.0 scans users' hard drives or specified locations for data files of accounting packages and mirrors that data in Microsoft Access databases (.mdb files) made accessible to Microsoft Excel. While this data can be updated anytime, changes made in Microsoft Excel do not affect the original data. Specific DLL files can be downloaded from the Office Update website to enable SBFM to import data from the various accounting systems.
- Creating Reports** – SBFM 4.0 creates seven of the most popular standard financial reports such as Income Statements, Balance Sheets, Sales Analysis, Ratios, Trial Balances, Statement of Cash Flows, and Statement of Change in Stockholders Equity. Each type of report takes advantage of Microsoft Excel features such as Pivot Tables, Outlining, Cell Tips, and Charting.
- Analyzing What-If Scenarios** – SBFM 4.0 provides a safe and powerful way for users to project financial data without changing original data. A What-If Wizard guides users through setups of different types of scenarios. Reports can then be generated based on these scenarios.

Other functions provided by SBFM 4.0 are:

- Ability to insert account balances automatically** – This feature allows the user to insert an account balance and other account information into an active cell or selection of cells on a worksheet. The account balance for a single account as of a single date, or multiple accounts for multiple dates can be inserted. When multiple accounts/dates are selected, SBFM 4.0 creates a table on the worksheet that resembles a crosstab report. To accomplish this,

Continued on next page

THE PERFECT GIFT!

Looking for a last-minute gift that's quick, easy and keeps on giving for the entire year? Take a tip from Doug Gorrie and consider giving a one-year membership in the North Texas PC Users Group. This is an especially appropriate gift for a friend or relative who is new to computing and interested in learning how to use and enjoy the PC.

Point out the Genealogy SIGs to people who are collecting information about their families, tell friends how much the Internet SIGs can help in easing their way into really using the Web, and the benefits of friendly, early computer lessons in the Introduction to the PC SIG.

More experienced users would appreciate value of vendor presentations in making important software and hardware decisions during the year.

If you have a friend or relative who constantly "borrows" your copy of the latest *North Texas PC News*, a gift membership might be especially welcome.

SBFM 4.0 uses its own custom function formulas.???

- **Recalculation of reports** – This feature allows users to recalculate reports in Report Workbooks to reflect changes in their databases.
- **Remapping of data** – As a business grows and organizes into different departments or divisions, the ability to re-map, or to place data into different categories or sub-categories, makes for a flexible and powerful system. This feature also allows users to consolidate data for different types of statements.
- **Ability to refresh data in an existing database.** – The Update button allows the user to refresh data in an existing database, updating the previously constructed reports.

Accessing SBFM 4.0

To access SBFM 4.0 features, double-click the SBFM 4.0 icon installed to the desktop; or inside Microsoft Excel 2000, click the Financial Manager menu that is displayed next to the Window menu once SBFM 4.0 is installed and loaded. Clicking on the menu displays the drop-down menu:

IMPORT Wizard

The first choice on the menu is the Import Wizard. The Import Wizard allows users to import data from their accounting packages for use in Microsoft Excel 2000. Supported accounting packages are listed in Lesson 1 of this module. The New Database Wizard steps you through the process of importing financial data from your accounting software files. It then saves this information, with the file name that you select, as a Microsoft Access database. After you have created this database, you are ready to begin.

How Does it Work?

The Import Wizard uses DAO to create a Microsoft Access database in which data from the user's accounting package is mirrored. SBFM 4.0 continues to use DAO to query the database to update data and create reports after data is imported.

Using the Import Wizard

To import data, click Import Wizard on the Financial Manager. The first step of the Import Wizard is displayed. The Import wizard searches the

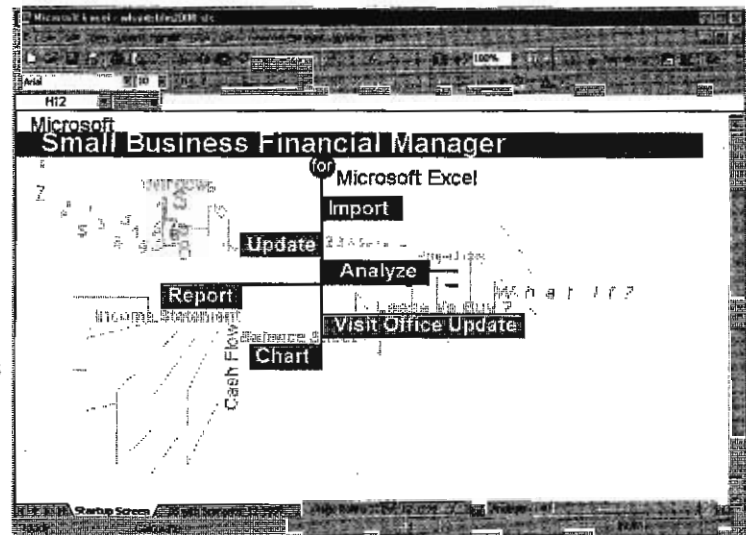
drive for accounting files and displays the file names for selection. If none are found, the browse button allows you to browse to the files you want to import. The SBFM database is created from the accounting files. Once the database has been created, it can be refreshed from new data in the accounting files.

When you run the New Database Wizard, you create a user name and password (optional). If you use the password protection, to access information from this database any user must enter a valid user name and password. This protects your data so that only the people you specify will be able to access it.

REPORT Wizard

SBFM 4.0 provides the ability to create the most commonly-used standard financial reports, each of which are designed to be Generally Accepted Accounting Principles (GAAP) compliant. Variations on the standard reports, such as Quarterly Trend, are available.

All functions of the SBFM are available from the main graphic menu as well as the Financial manager pull-down menu:



Following is an example of a Balance Sheet report produced by SBFM. All of the reports produced by SBFM are worksheets and Pivot tables from Excel. Selecting the level of detail desired is as simple as clicking on the outline controls at the left side of the worksheet. Charts of the data shown are produced by choosing the Chart Wizard, which steps the user through selecting the desired chart format and data range, then presenting the final chart.

STANDARD FINANCIAL REPORTS

The following table describes the four standard reports generated by the Report Wizard:

Report	Description
Income Statement	Reports profit (or loss) performance for a given period.
Balance Sheet	Gives a snapshot of a company's financial health at a given point.
Trial Balance	Provides a full audit trail of the balance and net change for each account. It lists the titles of each account in the General Ledger, the debit or credit balance of each account, and the totals of the debit and credit balances. It is <i>not</i> a formal accounting statement.
Statement of Change	Provides a supporting schedule to the stockholders equity section of the Balance Sheet. During an accounting period, owners/ shareholders may withdraw or add funds to contributed capital. This schedule reflects the net effect of these transactions.

Additional useful reports generated in SBFM 4.0 are the following:

Cash Flow	The shows the net cash flows for your business from operations, investments, and financing activities over the time period you specify
Ratios	The Key Ratios Comparison worksheet appears after you complete the Business Comparison Wizard. This worksheet shows side-by-side sets of four key financial ratios for your company and for your industry's average, and it ranks each of your company's ratios among companies of your size (top 25%, bottom 50%, and so on).
Sales Analysis	The Sales Analysis report is a PivotTable report that summarizes your sales by product, salesperson, or other category from your accounting data. You can reorganize the columns and rows by dragging buttons on the report

OTHER FINANCIAL REPORTS

SBFM 4.0 also creates reports which can help small business owners determine the health and sales of their businesses at given periods: Ratios Reports and Sales Analysis Reports.

RATIOS REPORTS

The ratios report combines and compares information from the balance sheet, cash flow, and income statement to produce 32 standard financial ratios. These ratios can help business owners gain insight into how their businesses are performing compared to other, similar businesses.

FINANCIAL HEALTH

At the top of the report, the Altman Z-Score calculates five financial ratios to determine the chances of a business going bankrupt in the coming year. An Altman Z-Score of 1.81 or less suggests a

strong chance of bankruptcy, while a score of 3.00 or better suggests little chance of bankruptcy. Below the Altman Z-Score are four categories of financial ratios:

- **Liquidity:** Describes the company's ability to meet short-term financial obligations by converting assets to cash. Severe liquidity problems can result in problems paying bills or even bankruptcy.
- **Activity:** Shows how the company operates, such as how many days customers take to pay, how many days it takes to pay vendors. This report can be used to help plan cash flow or assess the effectiveness of collection efforts.
- **Profitability:** Shows the company's profits in standard formats to help compare current profits to past profits, or to compare the relative profits of two different companies.
- **Coverage:** Shows the risks associated with a company's debts. Coverage ratios assess the risk that a company won't be able to meet financial obligations during adverse business conditions.

Sales Analysis Report

The Sales Analysis Report can help small business owners see which products are selling and how much is being sold, as well as who is selling and how much. The sales analysis report is actually a PivotTable that summarizes actual and/or budgeted sales by product, salesperson, or other category from your accounting data. A user could optionally include sales, cost of sales, and/or gross profit.

SBFM 4.0 takes advantage of the new Pivot Table and Charting features of Excel 2000 to enhance its formatting and what-if analysis capability.

PivotTable Views. Excel 2000 improves PivotTable dynamic views in a number of ways. Perhaps the most significant is by improving the interface to make the power of PivotTable views more widely available. PivotTable views in general are much easier to create and use in Excel 2000. Whereas users had to use a dialog to make changes before, they can now add and remove fields directly in a worksheet. Clear "drop zones" provide cues to help position the fields, and a tree view lets users expand and contract specific items.

Answers
Microsoft®

PivotTable AutoFormat. PivotTable Autoformats make it easy for users to create great looking reports from their PivotTable views.

PivotChart Dynamic Views. New PivotChart views give users the ability to create charts linked to PivotTable data, providing them with a new visual tool for analyzing their data. PivotChart views refresh with data and update themselves as users move and manage fields in the PivotTable.

I encourage all business owners and managers to explore the Small Business Financial Manager. Many of the calls we get from Excel users are oriented to generating charts and reports based on their financial data. Much of the labor expended on those charts and reports could be saved by using the SBFM wizards to generate reports similar to the ones they want. As I noted at the beginning of this article, several previous versions of Excel have had accompanying versions of SBFM available, included with the office package or as a standalone retail package.

Any questions you may have on Excel or SBFM can be sent via e-mail to . We will get the answers back to you, and we may address those questions in future articles if they are of general interest.

Bob Russell

WHAT A MONTH! COMPAQ CHANGES CEO'S, IBM AND MICROSOFT ANNOUNCE INCREASED PROFITS AND MS CONTINUES TO DELAY WINNT 5.0 & WIN 2000

What's the Price for all that CPU speed?

Here we go again.

Let's see, Microsoft is announcing record profits while announcing more delays in release of WinNt 5.0 and Windows 2000, Compaq has changed top CEO's while IBM smiles again with increased earnings and profits for the quarter as ATT/TCI makes a bid for one more major ISP. Ho hum, business as usual. Not too much happening this month of note.

On the other hand/CPU, scrounging around the Web reveals motherboard/mainboard vendors all set to support the newest, fastest AMD CPU's — all the way up to 500 MHz. This while AMD is announcing reduced earnings/profits for the present quarter and warning that manufacturing problems probably will keep them in check for at least another quarter.

Intel, not to be left behind, has gracefully dodged the Pentium III security debacle by ignoring it as the media blithely skips on to greener (more sensational) pastures. The more things change, the happier Intel is. Cyrix, National Semiconductor, remains a dis-

tant 3rd in the CPU race, hoist by a slower-than-most FPU on their chips.

CYRIX USERS LEFT BEHIND As slow FPU CONTINUES TO 'Hobble' RICHARDSON CPU'S

Leaves users who like the Cyrix CPU's in somewhat of a quandary if they don't like either the Intel or AMD options. Me, for example. I've stuck to the Cyrix CPU's through good and bad times simply out of respect for the home-town (Richardson, TX) team knowing that the Cyrix CPU's just don't measure up when it comes to FPU performance. But, then, I don't do a lot of graphics — until I do this newsletter.

AMD KEEPS UPPING ANTE With higher and higher SPEED PC CPU'S

How much longer? AMD is slipping 450 MHz K6 2 3D chips into the market with 500 MHz units not far behind. Both Intel and AMD are looking at 600+ MHz chips in the near future with 133 MHz - 200 MHz front-side bus operation. That's not just speculation.

If you want to know what your favorite CPU vendors are planning, check out the mainboard web sites are putting in their support FAQ's concerning future CPU iterations.

THE VARIETY STORE

A PERSONAL VIEW OF THE PC INDUSTRY,
NEW HARDWARE OPERATING SYSTEMS,
SOFTWARE AND APPLICATIONS
By REAGAN ANDREWS

HEADING TOWARD CPU speed Collision AS RF speeds climb And RF EMISSIONS INCREASE?

However, we're all heading toward a collision of CPU specs v. personal safety in terms of RF emissions. I think it could be serious, but then I'm an alarmist.

Reason, all those little RF (radio frequency) transmitters we call computers that are becoming ubiquitous and have invaded the homes of the unwary.

We need to go back to the beginnings of the PC evolution to appreciate the possible dangers here. My first PC was a dandy little IBM-PC with a

THE VARIETY STORE

CPU and bus running at 4.77 MHz. When IBM upped the ante to a 6 MHz PC-AT CPU, and clones began humping up to 10 - 12 MHz, biggest scandal at Comdex/Fall 86 was a sweep by the RF Nazis on the showroom exhibits looking for non-compliant PC boxes.

Now we need to look at Total RF Environment in Calculating Emission Risks

Now we are talking a 100 MHz+ front-side bus with CPU's running at 4x & 5x bus speeds. Funny thing about RF energy is the increased difficulty containing the 'genie' as frequency increases. What that means is that the RF energy needs a much smaller PC case leak, i.e., sloppy closure seams, to begin emitting some significant energy into the immediate environment.

Remember the big debate over cell phones and cancer a couple of years back? Even the most devout supporter of the technology admitted that holding a cell phone up to your head for extended periods probably wasn't a good idea. If I remember correctly, this sort of RF radiation is cumulative over time. That means

So, what's Peyton Weaver, left, 1st Saturday advocate, doing at the DFW Xchange vendor area at the April Meeting? You can see the PC Help Center signs in the upper right corner.

low level radiation is additive and the more RF energy the person is exposed to, the higher the risk level becomes.

Look at the home environment.

If you can see interference on your TV screen when the PC is turned on, that means the computer is adding to the ambient RF fields in your home. If you add this to a 'wireless' home LAN, 'wireless' telephone, aging microwave oven, ancient PC monitor, etc., etc. etc, the exposure is adding up.

Go backwards - No. Better Shielding is Answer to Growing RF problems

Does this mean we should all be Luddites? I don't think so. But it does mean we should think about technology in

terms that include personal safety in regard to RF exposure and look to assure that the PC cases we use/buy are adequately shielded against RF emissions.

DRAM/SDRAM prices Dropping in April? A Surprise at Vendor Areas

Since we're on the hardware trail so far, DRAM can't be far behind. Have been following DRAM, SDRAM and PC 100 SDRAM prices for the last couple of weeks closely. Is it just my imagination or is DRAM taking another nosedive? See some advertised PC 100 SDRAM prices 25% - 35% below those seen last month at the DFW Vendor Show and First Saturday.

'CAVEAT EMPTOR' reigns in Buying DRAM/SDRAM At flea markets

Another warning. This is 'caveat emptor' country we're heading into since lots of ven-



dors know most modern main-board/motherboard makers 'default' to the lower DRAM speed ratings on initial setup. Means those DIMM's users were told were 'real' 8 ns or 6 ns PC 100 SDRAMs may really be 10 ns units and not actually capable of running at the advertised speed.

MEMORY chip vendors DON'T HELP MUCH EITHER MARKINGS OFTEN ILLEGIBLE

DRAM chip vendors don't help much either. Try to find the 'real' speed rating on the DIMM's — try it, but you'll need a code book and a magnifying glass to be sure.

Even then, you may be in for a surprise since a number of unscrupulous memory houses are *re-marking* borderline and incapable sets to fool the unwary and indicate speed ratings that are questionable at best..

SURFING THE Web HARDER AT MICROSOFT SITE AS VENDOR REVAMPS SUPPORT SITE AGAIN

Software makes for some interesting times for users. Microsoft has (surprise!) re-vamped their web site (again) and I defy the casual user to find the latest 'patch' for their Win9x or IE 4x-5x in a reasonable effort.

I know MS has to support a lot of old and new packages, but this latest iteration of the site is ridiculous. Going back to the lead this month, makes



me wonder if MS is really trying.

Let me explain.

If MS is making record profits on 'old' software, where's the incentive to finish the new software? I mean why try to get Office 2000 done, or Windows 2000, or WinNT 5.0 out the door this year if they are able to sell so much 'old' software?

Makes a better case to see this as a delaying tactic to assure continued record sales in 2000 when this will all come together — maybe.

'GAMERS' RESPONSIBLE FOR SPEED RACES AMONG PC/SOFTWARE VENDORS

Enough paranoia! Question is where do we go from here? We're seeing technology actually responding to and pushed by the users 'hooked' on games. Is this 'bad' for us. No, we're actually reaping benefit of their addiction to speed.

It's the pressure from the interactive games people that is encouraging AMD and Intel to improve the CPU's, and to force Microsoft into making Windows 9x a more reliable, faster OS. Their need for speed and reliability is voracious and is driving the whole hardware industry.

If MS could release a Windows that was twice as fast as Win 9x and wouldn't crash in the middle of large projects, MS would do so immediately. And we would all stand in line (maybe not me) to buy it if it were available. (Please, I've already heard from the Linux 'wienies' that Linux is available now. There's just not any 'real' software for the Linux OS available that compares with my familiar Windows applications.)

TOO MANY COOKS — WHO DON'T TALK TO ONE ANOTHER MICROSOFT'S 'REAL' PROBLEM

Real problem is that MS has too many people who don't talk to one another involved in the next-generation Windows project. There doesn't appear to be someone similar to Brad Silverberg who can bring it all together in the Windows camp anymore.

That's a shame, and we'll all pay for it in the long run.

In the mean time, I'll struggle along with the foibles of Win9x and hope for a better day tomorrow when the 'real' next generation of Windows comes along. I may even be tottering along on a new PC driven by a 1 G CPU — who knows...

Reagan Andrews

Selected SIG Reports . . .

News and meeting notes of Special Interest Groups

(Material for this column should be sent to Connie Andrews, Special Interest Group Editor, at connie.andrews@ntpcug.org before the PC News monthly deadline listed on the inside front cover.)

ACCESS SIG

The Big Day: Thanks to so many people, who have invested so much work and worry in finding us a new meeting place. The big day is May 15, 1999. Not all the SIGs will be meeting, but this one will. We've reserved a block of time, from 9:00AM until Noon, for a joint meeting of the Beginning Visual Basic, Visual Basic, Microsoft Access, and ActiveX Application Developers SIGs. You'll find us in our new quarters on the West side of Big Town Mall - not in the Mall itself; you'll enter from the parking lot. If you're coming from the Exhibition Hall where the Vendor Show is held, you'll walk across the parking lot, through the Mall and out the West side. From that West exit, continue to the westernmost projection of the building, then turn right and start looking for our sign.

What We Hope To Accomplish:

We want to get reacquainted and discuss what we'd like to do in our SIGs in the near future. Of particular interest is how we can work together to get the word out to our friends who aren't members and don't receive the *News*. We'll talk a little "shop", we'll try together to answer questions, and, if we've got some time, Larry will talk about programming in Access Visual Basic for Applications language. Just what kind of presentation we'll be able to put on will depend on the availability of projection equipment. We may or may not have "interim arrangements" but we know that we are hurrying along to resume our meetings at this earliest opportunity. That is rushing those who must make the final arrangements for equipment and the routine of setting it up for our meetings will not be complete. Please

FROM THE SIG COORDINATOR

The following are changes/additions/needs that the NTPCUG has made to the SIG's.

Groups Looking for Help in Leading their SIGs:

- **PC Help Center** [Contact Reagan Andrews @ 214-828-0699h or reagan.andrews@ntpcug.org]
- **MS Word for Windows** [Contact Jan Patton @ (903) 886-6249h or janpat@unicomp.net]
- **Spreadsheets SIG** [Contact Eb Foerster @ (214) 357-7602 h]
- **Dallas Corel** [Contact Marsha Drebelbis (214) 951-0266]
- **Hardware Solutions** [Contact Charles Miller (903) 938-4220 h]

The requirements for forming a SIG are:

- Leadership** — at least one individual willing to lead the SIG, and an assistant.
- Membership** — at least eight individuals willing to attend the SIG fairly consistently.

If you have a group that meets these qualifications or would like help in finding others who might share your interests, please contact me at (972) 517-7430 (H) or (972) 960-4276 (W).

SPECIAL INTEREST GROUPS SIG LEADER LISTINGS

SIG Coordinator

Alex Lilley (972) 517-7430 h
Legend: h = Home #, w = Work #
M = Metro #

ACT!

Jim Thompson... (817) 261-6159 h
..... (972) 487-8499 w
Deborah Bean... (972) 475-7463 h
..... (972) 475-3124 w
dbean@misresource.com

Access

Larry Linson..... (817) 481-2350 hM
larrylinson@ntpcug.org
Jack Atkinson..... (817) 481-6623 h
Dianna DeCicco (972) 446-0639 h
Tom Browning ... (214) 692-9784 h

Alpha 4/5

Bill Parker..... (214) 369-5889 h
wparker@mymail.net
Ron Jackson..... (972) 276-3661 h

ActiveX Developers

Larry Linson..... (817) 481-2350 h
larrylinson@ntpcug.org
Dan Ogden..... (972) 417-1916 w
dogden@gte.net
Linda Moore..... (214) 342-8833

Assembly Language SIG

Frank Cavalito... (972) 423-9221 h
fcaval@svbell.net
Glynn Brooks..... (972) 578-8737 h
..... (972) 716-3281 w
gbrooks@dmans.com

Business Applications/DAC

Putt Shaw..... (972) 235-2559 h
puttshaw@wars.net
Bruce Schubert... (972) 394-8328 h
..... (972) 233-8363 w

CAD

Bill Sephton..... (972) 296-1799 h
..... (972) 387-3500 w
Neil Culver..... (972) 690-6552 h
..... (972) 235-3081 w



be patient with us while we all get reorganized.

Don't throw out those last two issues of the North Texas PC News: The information on Access resources can be very helpful. Keep them for reference on that subject, if for nothing else. (Sentimental old fogey that I am, I think I have saved every issue I've received since I joined the NTPCUG, but I wouldn't suggest you go that far.)

Can't Use Those Web Resources Because You Don't have an ISP? That's not a valid excuse, not any more! Now I can give you a review: not only is the price right at www.netzero.com, I've had only one instance where it was not available and reliable in using it for over two months. All you need is a computer, a relatively fast modem, and a phone line. Their ISP service is free, supported by advertising, and they have a plethora of local access numbers in cities all over the US - I was even able to logon from a hotel in Houston when there on a visit. If you can't arrange for one of your Web-enabled friends to visit the site, download the software, and get you the access number, you can call them at (818) 879-7255. They have been mentioned in *Current Technology* magazine and are in *Computer Currents'* list of Internet Service Providers.

A Special Invitation: Come join us at the Access SIG for the continuing tutorial on VBA if you are interested in *any* of the many products, from Microsoft and other vendors, that use Visual Basic for Applications (VBA) as their macro or programming language. Don't expect us to know specifics about the "object model" of other products, but the VBA statements and the way objects, collections, containers, etc.

are manipulated are consistent across the products.

Service Release 2 for Office 97: visit www.microsoft.com/office/info/sr2/info.htm and information on how to order it on CD (the CD is free and so is the shipping and handling). SR-2 includes a fix for the widely publicized, but not-so-widely-encountered data corruption problem, and appears to contain the revised Jet 3.5 engine update (though that, too, is still available for download from support.microsoft.com/download/support/mslfiles/jet35upd.exe).

And a final note on that data corruption problem: Andy Baron, Contributing Editor of *Access / Office / VBA Advisor* magazine and MVP on Microsoft's public Access newsgroup has published his own code workaround to avoid the problem on the Web site, www.advisor.com. Andy's fix applies to Access 2.0 and 7.0 (95), as well as to 8.0 (97).

We are looking forward to the advent of newsgroups or message conferences on our Web site. There's already free e-mail. Check the February or April issue for instructions or, if you have an ISP, go to <http://mail.ntpcug.org/emurl>. We bid a fond farewell to the NTPCUG BBS that has served us so well for so long.

We look forward to seeing you at our next meeting - at Big Town Mall on May 15th.

Larry Linson

ActiveX Application Developers SIG

The ActiveX SIG will meet jointly with three other SIGs on May 15 from 9:00 AM until Noon at our new meeting place at Big Town

SIG LEADER LISTING

Communications

Alan Brosz (972) 648-7928 h
 (972) 498-1237 w
alan.brosz@mcl.com
 Bill Smith (972) 960-8227 h
 (214) 220-9388 w
bjsmith@onramp.net

Dallas Corel

Marsha Drebelbis (214) 951-0266
mdreh@itigraph.com
 Susan Biggs (214) 340-7794

DOS/ Operating Systems

Jim Hoisington (972) 416-3101 h
 Reagan Andrews (214) 828-0699 h
reagana@swbell.net

Desktop Publishing

Mark Stuert (214) 528-5311 h

Fox Pro

Kevin White (972) 383-5211 w

Genealogy - General

Al Sanford (972) 278-7888 h
 (972) 278-1742 fax
asanford@chrysalis.com

Genealogy - Family Tree Maker

Genealogy - PAF (Acting)

Al Sanford (972) 278-7888 h
asanford@chrysalis.com

Genealogy - Ultimate Family Tree

Dave Heston (972) 539-5202
heston@iname.com

Genealogy - The Master Genealogist

Jeri Steele (972) 306-1596 h
 (972) 917-3917 w
steele@pioneerinfo.com

Hardware Solutions

Charles Miller (903) 938-4220 h
cbaxter@pobox.com
 Ralph Beaver (817) 624-9530 h
 Gary Johnson (972) 938-0344 h

Help Center

Reagari Andrews (214) 828-0699 h
 Timothy Carmichael
 (972) 566-4626 w

Internet-Beginner

Tom O'Keefe (972) 247-8812 h
 Doug Gorrie (972) 618-8002 h
 (214) 464-4568 w
 Enk Leaseburg (817) 265-7550 hM

SIG LEADER LISTING

Internet-Advanced

Tom O'Keefe (972) 247-8812 h

Internet-Advanced Ctd.

Doug Gorne (972) 618-8002 h
 (214) 464-4568 w
 Erik Leaseburg (817) 266-7550 hM

Internet-WEB Developers

Mark Camp (972) 404-4456
wowmaster@webdallas.com
 Chris Nelson

Introduction to the PC

Harold (Spike) Smith
 (972) 231-0730 h
Spike3@home.com
 John Randall
jranda1@albn.net

Investors

Dick Fichtman (972) 437-0322 h
rfichtman@wsu.com

Java

Kevin Starratt (972) 444-6386 w
 (817) 577-3845 h
wks@fedex.com
 Don Benish (972) 705-9512
dbenish@airmail.net

Lotus Notes & Domino

B.J. Shutz

Micrografx (Graphics)

Neal Berkowitz (972) 475-7463 h
 (972) 475-3124 w
nberk@misresource.com
misr@mpu.net
 Shanna Dyer
sdyer@misresource.com

MS Word for Windows

Jan Patton (903) 886-6249 h
janpat@unicomp.net
 Michelle Wood (972) 401-3984 h
 (972) 732-5172 w
mwood@flash.net
 Sherry Covert (972) 732-4317 w
 (972) 335-8358 h
shervinc@ix.netcom.com

Microsoft FrontPage

Sam Lugo
sam@lugo-consulting.com
 Pamela Lugo
pamela@lugo-consulting.com



Mall. See the Access SIG notes for more information.

Larry Linson

Dallas Corel SIG NOTES

MAY 1999

May 15 Grand Opening

Dallas Corel SIG will defer in May to the Main Meeting Program. Join us in the grand opening of the new User Group Meeting Hall at Big Town Mall. (See the map elsewhere in this newsletter for directions.) At 10:00 a.m. to 11:30 a.m.

Adobe will present the Main Meeting program, introducing their new cross-platform professional publishing software, *InDesign*. Running on Windows 98, Windows NT 4.0 and Mac OS8.5 platforms, *InDesign* works seamlessly with Adobe Photoshop and Adobe Illustrator. It can even open QuarkXPress and PageMaker files, and can save publications in Acrobat PDF file format.

This topic will be of significant interest to many in our SIG. We will be curious how it takes to Corel files.

There will be a drawing for free products, so bring your NTPCUG member card so you're eligible to win. Check out the DFW/Xchange Computer Vendor Show at the Exhibition Hall too!

April in Review

Our SIG's regular attendees brought their usual good spirits to our April meeting at Brookriver Center's atrium. Scanning is an endless topic and we gained much insight from several of our members' experience. **Marsha Drebelbis** described the different uses for 1-bit, 8-bit and 24-bit scans of graphic images. Then she demonstrated on the SIG's PC how very useful the lowly 1-bit TIFF can be when creating a complex map-like illustration.

She brought work recently completed for a client as examples. The layering capabilities of DRAW bring order to the process, with the "Object Manager" Docker in DRAW 8 becoming indispensable. We peered into PAINT 8 too, for those "You've got to have it" special effects. There's always something new to learn in this graphics field, and our members are a valuable source of fresh ideas! For more reference, see *Corel PHOTO-PAINT 8, The Official Guide*, by

David Huss and visit <http://www.scantips.com>.

Road Show in Dallas May 27

Corel invites you to join this exciting 34-city North American tour to launch WordPerfect Office 2000 and CorelDRAW 9 Graphics Suite.



Dallas Corel Is A SIG Of North Texas PC Users Group



This event is open to anyone interested in learning more about Corel's products and the solutions they can offer your business. The event is free of charge, and all registered attendees will receive a free gift from Corel. To register, RSVP online now at

<http://www.corel.com/roadshow/index.htm>. The location will be Sheraton Dallas Brookhollow, 1241 W. Mockingbird Lane, Dallas, TX 75247; 8:30 a.m. - 12:00 at I-35 and Mockingbird Lane. Free parking.

Member Showcase in June

Start getting ready for June 19. We'll settle into the new User Group Meeting Hall at Big Town Mall with Dallas Corel's most popular meeting topic. It's the Annual Member Showcase, where SIG members share with the group examples of their favorite and successful projects created in Corel. That's with any Corel product, pro-

duced for pleasure or profit. We'll want to hear your tips and tricks about how you created it, or benefits that resulted.

Recent Programs at Dallas Corel SIG

- ❖ Apr/98 - Web Page Design Tips & Trends
- ❖ May/98 - Member Showcase
- ❖ Jun/98 - Graphics Computer Trends Discussion
- ❖ Jul/98 - Digital Cameras
- ❖ Aug/98 - Presentations 8
- ❖ Sep/98 - Ventura 8
- ❖ Oct/98 - Fine Tuning Your Web Page
- ❖ Nov/98 - Trademark Law for the New Millenium
- ❖ Dec/98 - PAINT 8 Effects
- ❖ Jan/99 - Roundtable Discussion
- ❖ Feb/99 - Paper for Successful Inkjet Printer Output
- ❖ Mar/99 - DRAW & PAINT Q & A
- ❖ Apr/99 - Scanning For Success
Marsha Drebelbis

DOS/OPERATING SYSTEMS SIG

The DOS/Operating Systems SIG shall rise again - in June!

Meanwhile, lets look at some of the changes we've seen since the beginning of this SIG. I'm typing this note in MS Word 97, a full WYSIWG word processor that displays color graphics (if I want), 'real' typefaces, all the editing marks and allows 'zooming' the view of the page to suit my whims. It's correcting my spelling and syntax as soon as words hit the screen. The PC is a 300 MHz, Cyrix MII - powered box with 256M S100

SIG LEADER LISTING

Microsoft Networking

- Richard Miles (214) 767-7815 w
..... (972) 296-6356 h
- Gal Brand (214) 508-8370 w
..... (214) 341-7182 h

Microsoft Visual C++/MFC

- John Cole (972) 669-4700 w
jcoble@airmail.net
- Wade Emmert (214) 740-3164 w
emmert@airmail.net

Networking

- Mike Momen (972) 238-1244 h
..... (972) 915-2158 w
- Leroy Tannison
- Francis Bright

Programmers

- Jim Hoisington ... (972) 416-3101 h

QuickBooks

- Dave Guier (817) 429-7417 h
..... (817) 265-1618 w

Quicken

- W. L. Harris (972) 291-7616 h
- Phil Faulkner (972) 239-0561 h

Spreadsheet/Spre.Dev

- Eb Foerster (214) 357-7602 h
ebfoerster@juno.com

Visual Basic - Beginning

- Jim Carter ... (972) 235-5968 h
- Thomas Lewis ... (972) 984-8387
- Jim Hart

Visual Basic - Advanced

- Thomas Lewis ... (972) 994-6387
- Jim Carter (972) 235-5968 h

VRGN Internet Gaming

- Al Aliman

Windows - Applications

- Neal Berkowitz ... (972) 475-7463 h
..... (972) 475-3124 w
nberk@misresource.com
msr@cmpu.net
- Deborah Bean ... (972) 475-7463 h
..... (972) 475-3124 w
dbean@misresource.com

WordPerfect / Windows

- Cindy Adams (817) 481-1300 wM
- Diane Bentley

IMPORTANT COREL ADDRESSES & PHONE NUMBERS

Corel Corporation
1600 Carling Avenue,
Ottawa, Ontario, Canada
K1Z 8R7

- ❖ Technical Support Representatives 800-818-1848
- ❖ G1 Release, CD-Rom only (latest "fixes" and patches for Corel products) 800-772-6735
- ❖ Customer Service Representatives 800-772-6735
- ❖ IVAN (Interactive Voice Answering Network) 613-728-1990
- ❖ 24 Hour Automated Fax System 613-728-0826 Ext.3080
- ❖ Technical Support hours are 4AM to 8PM (EST) excluding holidays
- ❖ To obtain our catalogue please request document #2000.

DRAM, 9.1G SCSI-III disk drive, 8G tape backup drive, 100M ZIP SCSI drive and is playing Bach's "Tocatta & Fugue" on the SCSI CD-ROM drive as I type.

— All of this is courtesy of MS Windows 95 OSR 2.1.

In contrast, my first article for *The PC News* in 1986 was an exercise in using DOS 3.3 commands in the AUTOEXEC.BAT file to check hard disk integrity. I was writing in MS Word 3.0 (DOS) on our 'original'

DOS Operating Systems SIG

IBM-PC in which I had just installed a CDC 'Wren II' hard drive RLL'd out to a huge 60 M via an Adaptec RLL controller card. The PC had 640K DRAM and tottered along at 4.77 MHz. Reason for the article was the uncertainty involved in using RLL 2 7 encoding on a drive intended to be used with MFM encoding.

Did I need 60 M?

No (not then) since DOS 3.3 only occupied about 3 M of disk space and MS Word, with all the then available bells and whistles, a scant 4 M. Even with *Ventura Publisher 2* (running under DRI's GEM) and a bunch of printer and screen fonts installed, the total barely exceeded 12 M.

Could I have produced the NTPCUG newsletter with this combination?

The original newsletter publisher, John Pribyl did with similar hardware (a 'real' PC-XT) for several years until he was supplied with an Acer 386, bigger hard drive and moved to VP for Windows 3.0. But, both he and I found ourselves saving frequently — and re-booting almost as frequently.



We also worked much, much more slowly then.

Stability remains a problem with Windows 9x. I've contemplated moving up to WinNT 4.0 just for the increased reliability. Resources are not the problem. The current 300 MHz machine and 256 M of SDRAM are quite sufficient for the load imposed by WinNT — until I dive into large-scale graphical manipulations.

It's still the 'driver' problems and lack of USB support that keep me locked into Win 9x. As have many other users with similar issues, I've been eagerly waiting for NT 5 (or is it 2000?) where the NT cognoscenti promised this concern would be relegated to history. At the current rate, I may be 'retired' from editing the newsletter before we see the promised product.

Until then, I'll keep relying on the present setup in Win 9x and thanking Microsoft for Word 97's ability to resurrect the file where I crashed

before I could remind myself "It's time to save."

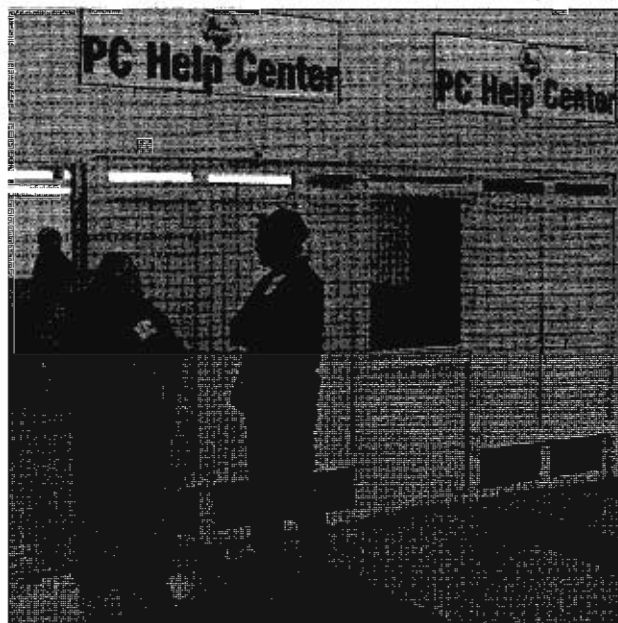
Reagan Andrews

PC Help Center SIG

The PC Help Center just keeps on building. At the April meeting, Timothy and Christopher Carmichael, Gil Brand, Bob Russell and 'Spike' Smith were kept busy helping both new and advanced users with problems/questions concerning PC hardware and software. Most of the questions asked were matters of user preferences contrasted with vendors' 'default' installation/setup and ranged from simple installation problems to much more complex issues involving the marriage between OS's and hardware.

Some questions just were not possible to answer, including a user's request to identify proprietary DRAM SIMMs from two different laptop PC's so he could buy the right kind of memory (Fast Page Mode or Extended Data Out) for his machines. Somewhere at home, I have a Kingston catalog that lists and cross-references various PC vendors' memory modules, but not at the Help Center area. I may have to bring it to the May meeting.

Again, a lot of NTPCUG members dropped by the Help Center and also helped while



At the PC Help Center in the vendor area, Timothy Carmichael, left, discusses the finer points of CD-ROM installation with a user at the April meeting.

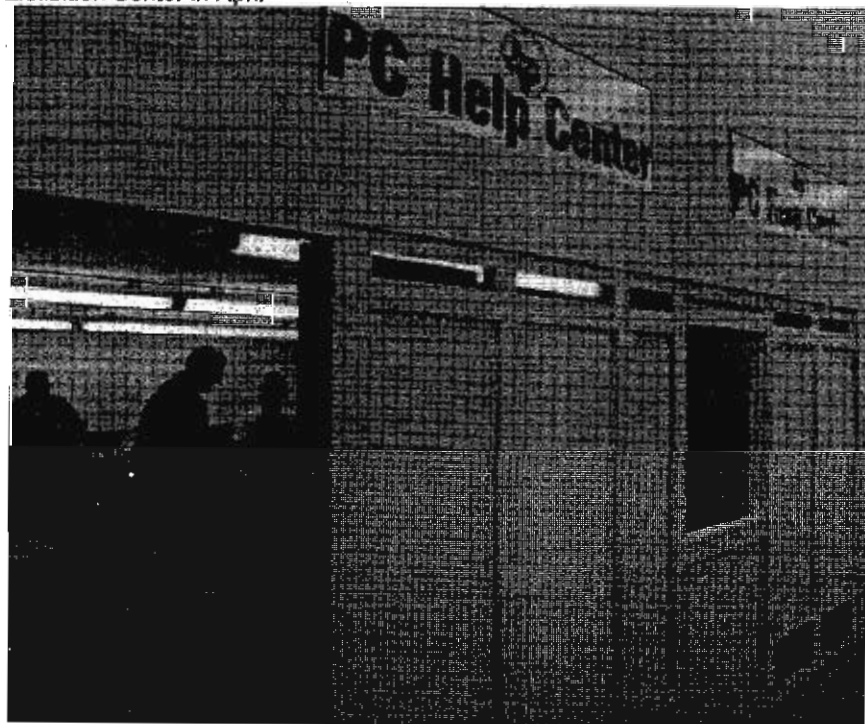
SIG

they were discussing various PC-related topics. It was really nice to be able to interact with members and to have the scope and range of PC expertise available.

Purpose of the Help Center SIG

The Help Center SIG is an effort to reach out to users in the Vendor Area who are having problems with their PC's. It is based on the "Help Desk" model and aimed at answering basic PC-related questions — and then pointing the users to the appropriate NTPCUG or Apple Corps SIG's where further information and assistance will be available to them. We hope it will generate both goodwill and user interest in joining our respective users groups in the process. We will welcome any NTPCUG or Apple

Below, Bob Russell, right, talks over an Excel spreadsheet issue with Eb Foerster, Spreadsheet SIG leader at the PC Help Center at Big Town Exhibition Center in April



Corps member who would like to volunteer in this effort.

Help Center SIG hours will be 8:30 a.m. until 1:00 p.m. unless Help Center volunteers decide to close early in order to attend the business meeting at 12:30.

Reagan Andrews

Micrografx SIG

For information on when and where the Micrografx SIG will meet, please contact Neal A. Berkowitz at nberk@misresource.com.

The focus of the SIG continues to be the Micrografx imaging and 3D programs with an emphasis on Web development. At the request of some of the newcomers to the group we have decided to divide the meeting into two sessions, the first is an ongoing series of discussions on the basics of imaging. The second hour is used to discuss

new tricks with the programs. During the second hour we also have a question and answer period that can cover just about anything. We also get sneak peeks into the future development of the Micrografx programs as well as having drawings for T-shirts, chili aprons, and programs.

The first hour covers the basics. In March we began with the basics of Palettes from the basic 16 color palette of early Windows to the 256 color palette and onward to the 24 bit RGB and 32 bit CMYK palettes. Also discussed was the all-important question of which one should be used for what. For example, when working with GIF images you might want to consider a reduced palette to speed up downloading. The topic was investigated both on a general level and how Picture Publisher can be used with the various formats of palettes and files.

In April we continued the discussion covering color management, color correction, and masks. Once again we approached the topics first from a generalized perspective (which incidentally will be a topic at a later date) then from the way Micrografx handles the topics.

Upcoming months will be used to cover the topics of image resolution, objects and how to really get fancy with them, and how to simplify tasks with macros — or in the Micrografx world, the command center.

There is a great deal of power in Picture Publisher, much of which the average user never even knows about. We will be diving into these features also in upcoming sessions.

Along the way we will also sidestep every so often into the 3D world of Simply 3D. Using the capabilities of this product along with Picture Publisher, some of the members of the group have put out striking animations. We have already covered some of the basic

do's and don'ts. We will be covering even more in future months.

Also in the works are sessions on Service bureaus (Hey, we all have to make hardcopy output once in a while) as well as the unplanned as yet previews of new programs.

Neal Berkowitz

Visual Basic SIG - BEGINNING

The Beginning Visual Basic SIG will meet jointly with three other SIGs on May 15 from 9:00 AM until Noon at our new meeting place at Big Town Mall. See the Access SIG notes for more information.

While you are waiting for the SIG meetings to resume, there are a few Microsoft Knowledge Base articles that you may want to check into before or as you upgrade to Visual Basic 6.0.

The article in Q194295 is entitled "How to Tell That Visual Studio 6.0 Service Packs Are Installed" and includes specific instructions on how to tell whether Visual Basic 6.0 has been upgraded with Service Pack 1 and/or Service Pack 2. It is important to note that the Service Packs are issued on a single CD for all Visual Studio 6.0 components. If all you have is Visual Basic 6.0, you still use the Visual Studio 6.0 Service Pack CD to upgrade your Visual Basic 6.0. It is also important to note that Service Pack 2 will apply the corrections from Service Pack 1 as well as Service Pack 2.

Another article from the Microsoft Knowledge Base that is related is the article Q194022 entitled "Visual Studio Service Packs, What, Where, and Why" and includes more information on the contents of the Visual Studio 6.0 service packs and where to obtain them. This information is also available from the Visual Studio 6.0 Service Pack Web Site at: <http://msdn.microsoft.com/vstudio/sp/default.asp>.



There are known compatibility issues between Visual Basic version 5.0 and 6.0. Article Q217017 summarizes the compatibility issues between these two versions of Visual Basic. The article explains some of the techniques for fixing these incompatibilities and references other Knowledge Base articles for additional compatibility issues.

If you have some experiences with Visual Basic that you would like to share with the SIG members, please contact me and I will make the necessary arrangements. Give me a call at (972) 235-5968 or you may e-mail me at Jim.Carter@ntpcug.org or Jim_Carter@msn.com.

Bring your questions on Beginning Visual Basic to our meeting on Saturday, May 15, 1999 at the Big Town Mall. Check the NTPCUG Web site for details on the SIG meetings (www.ntpcug.org).

Jim Carter

Visual Basic SIG - ADVANCED

The Advanced Visual Basic SIG will meet jointly with three other SIGs on May 15 from 9:00 AM until Noon at our new meeting place at Big Town Mall. See the Access SIG notes for more information.

Jim Carter



North Texas PC Users Group, Inc

Membership Application

The NTPCUG is a non-profit, independent organization of individuals learning to apply personal computers to practical problems. For additional information, call (214) 746-4699.

Member # _____

Name (Last): _____ (First): _____

Address: _____

City: _____ State: _____ ZIP: _____

Phone (Check preferred.) Home: (____) _____ - _____

Work: (____) _____ - _____ Ext. _____

Occupation/Profession: _____

Check one from each column below

Payment:	Membership	Application Status:
Cash _____	Classification:	New Member _____
Check _____	Regular (\$30.00)	Renewal _____
Credit Card _____	Student (\$25.00)	Address Change _____

Applications should be mailed to: North Texas PC Users Group, P.O. Box 703449, Dallas, TX 75370-3449 (Make checks payable to : NTPCUG.)

Please initial here _____ if you do not wish to have your address included on member lists sold for the NTPCUG's benefit to advertisers of PC compatible products.

Inside the North Texas PC Users Group Community

Volunteers in Action



by Claude McClure

Volunteers' Sweat Equity

Members of the NTPCUG will all get together to fix up the Big Town Mall SIG meeting area April 24. That location is Suite 934 and has several rooms for SIG meetings. **Harold (Spike) Smith** is doing a massive amount of legwork acquiring the Certificate of Occupancy for us. He arranged for the building to be open the Saturday after the April monthly meeting so that volunteers could do a little cleaning up to be ready for the May 15th. initial NTPCUG meeting. Other volunteers have contacted Spike for the best times to get together for minor hammer and nails and wiring modifications. **Bob Lozen, Harry Lees** and **Bob Clarke** have been waiting for this opportunity to volunteer with these skills.

Helpers will doubtless make a good area for our return to one of the club's most enjoyable experiences.

That experience is learning how to manage the programs we have loaded on our computers and in the company of fellow club members. Everyone has been asking which SIGs will meet and which hours they will meet. This next month will answer many of those questions, so come prepared to learn or teach or just sit back and watch. I have it on good authority that there will be plenty of comfortable metal chairs for seating of all groups at the May meeting. All of this has been arranged for us by volunteers like us, who give a little bit more so we can enjoy the NTPCUG a little bit more.

A special thanks to **Mark Mills, Jim Hoisington** and the **Search Committee** for their volunteer work in establishing a permanent meeting place for the North Texas PC Users Group. Thanks for the persistence in

pushing for a place to host the vendor show along with DFW Xchange and the Apple Corps of Dallas.

Take a few minutes this next meeting to thank the dependable volunteer who helps you at the entrance door or PC Help SIG or one of the other many places volunteers serve. Please give special thanks to the Vendor Area and Information Booth Volun-

teers whose names are listed below.

Big Town Liaison
Andy Reese
Robert Hilliard
Alex Lilley

Vendor Setup/Break-down

Anchors:
David Slavik
Kenneth Berg
Dick Abbott
Crew:
Dennis Briningier
Dan Guyer

James Guyer
Mark Guyer
James Hope (Double)
Fred Steadman
Daniel Thomas

Auditorium Presentations
Timothy Carmichael
Christopher Carmichael

Newsletter Labels
Charlie Fernandez

Information/Registration Booth

Statistician:
Connie Andrews
Ralph Beaver (Assistant)

Scheduler:
Bob Wuller

Anchors:
Roger Bopp
Cinda Lovil (Double)
David Martin
Bob McNeil (Double)
Raymond Reyes
Ken Sauter

Booth Crew:
Al Aston
Deborah Bean
Ralph Beaver
Jim Boyce

Jo Francis Byrd
Roger Crenshaw
Randy Durham
Tim Foster (Double)
James Gorak
Herbert Gross
Neil Jochelson
John McNeil (Double)
Linda Moore
Martin Moomaw
Thelda Opella
Oscar Tyler
Thomas Ward

April 23rd SIG Area Cleaning Crew
Sergeant Major
Spike Smith
1st Sergeant
Claude McClure
Betty McClure
Don Benish
Gil Brand
Taylor Sharpe
Recorder (Film)
Reagan Andrews

VOLUNTEER INFORMATION

1. Via BBS: (972)387-2751, (972)387-2752 or (972)263-9036 (metro). Sign up on the Volunteer Conference - make the subject matter your area of interest.

2. Meeting day: Sign up at the Information Booth or DOM Booth to work those areas in a coming month.

3. By phone:

Auditorium Presentations

Timothy Carmichael..... (972) 661-4626 (w)

Information Booth and General Information

Claude McClure..... (972) 867-0978 (h)

North Texas PC Users Group, Inc.

P.O. Box 703449, Dallas, TX 75370-3449

Phone (214) 746-4699 for recorded information about the North Texas PC Users Group and scheduled meeting date times and locations. Please leave a message if you would like specific information about the Group. Or, visit our Web Page at: www.ntpcug.org

The North Texas PC Users Group, Inc., is a non-profit, independent group, not associated with any corporation. Membership is open to owners and others interested in exchanging ideas, information, hardware, predictions, and other items related to personal and compatible computers. To join the Group, complete the application blank printed elsewhere in this newsletter, and send with \$30 membership dues to the Membership Director — address shown below. Subscription to the newsletter is included with each membership.

The Group meets once each month, usually on the second or third Saturday. See inside front cover for date, time and place of the next North Texas PC Users Group meeting.



North Texas PC Users Group, Inc. Board of Directors

Jim Hoisington *Chairman*
Marsha Drebelbis **Timothy Carmichael**
Alex Lilley **Andy Oliver**
Andy Reese

Password problems?

Call Doug Gorrie at..... (214) 464-4568

NTPCUG Officers

President	Jim Hoisington	(972) 416-3101 h
President-Elect	(Open)	
Program Chairman	Timothy Carmichael	(972) 566-4626 w
Treasurer	Eb Foerster	(214) 357-7602 h
Secretary	Wade Emmert	(214) 740-3164 w
Membership Dir.	Jim Hoisington	(972) 416-3101h
Advertising Dir. (Acting)	Connie Andrews	(214) 828-0699h
Publicity	Rob Alschbach	(214) 368-4979 b
Volunteer Coord.	Claude McClure	(972) 867-0978 h

DFW Xchange **Information** (214) 746-3365
www.dfwxchange.com

Members Emeritus

John Pribyl (1924 - 1993)
Phil Chamberlain **Jim Hoisington**
David McGehee **Stuart Yarus**
Tom Prickett **Connie Andrews**
Kathryn Loafman **Reagan Andrews**
Fred Williams **Timothy Carmichael**
Andy Oliver **Mark Gruner**

Address Changes, etc...

Payment of dues, address changes, and inquiries about membership should be directed to:

NTPCUG Membership Director
P.O. Box 703449
Dallas, Texas 75370-3449

(Check newsletter mailing label for your renewal date..)



North Texas PC Users Group
P.O. Box 703449
Dallas, Texas 75370-3449

Non Profit Org.
U.S. Postage Paid
Arlington, TX
Permit No. 823

Address Correction Requested

18.5

North Texas PC Users Group

